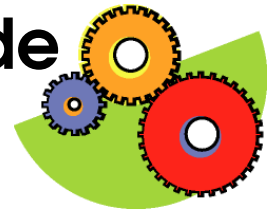


Simple Machines Study Guide

SOL 3.2

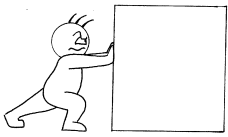


Energy

*Ability to do _____ is energy.

*Use simple machines to make our work _____.

Force



***Force** is the _____ or pull that is placed on an object.

*We measure force in _____.

*When you push or pull something, you apply a _____ to it.

Friction



***Friction** is a _____ force.

*Friction slows all things to a _____.

Example:

A ball will roll with LESS friction on hard surface than on grass.



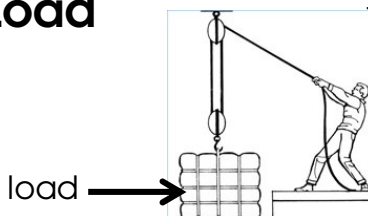
Gravity



***Gravity** _____ two objects together.

*Gravity _____ objects to the ground.

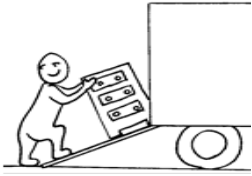
Load



*A **load** is the object being _____ or lifted.

There are _____ different simple machines that help us do work easier.

Inclined Plane



- *An _____ is a sloping surface.
- *This tool helps in _____ or _____ a load.
- *It helps move things _____ and _____ easier.

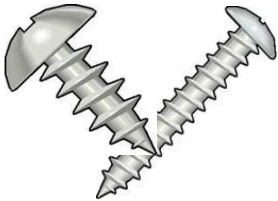
Wedge



- *A _____ is two inclined planes with bases together.
- *This tool helps us _____ or move things apart.
- *It is used for **cutting** and **splitting**.

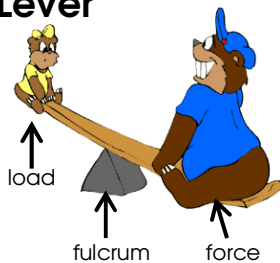


Screw



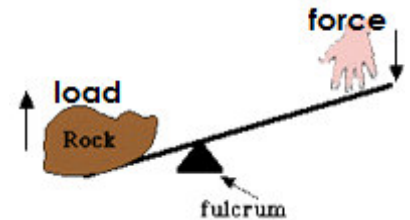
- *A _____ is an inclined plane that moves around and around as it moved forward, upward, or downward.
- *This tool help us **hold** things together.
- *A jar lid is also a screw!

Lever



- *A _____ is a stick or bar that has three parts.

- *fulcrum
- *load
- *force



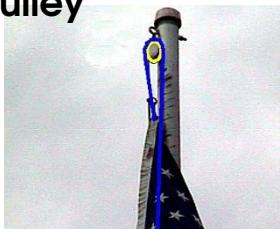
- *This tool helps you **lift** heavy loads.

Wheel and Axle



- *A wheel and axle is a wheel with a bar through it.
- *This tool helps _____ people and things.
- *It makes moving things easier.

Pulley



- *A pulley is a _____ with a rope over it.
- *This tool helps us move things up and down / back and forth.
- *There are 2 kinds of pulleys (fixed and movable)

