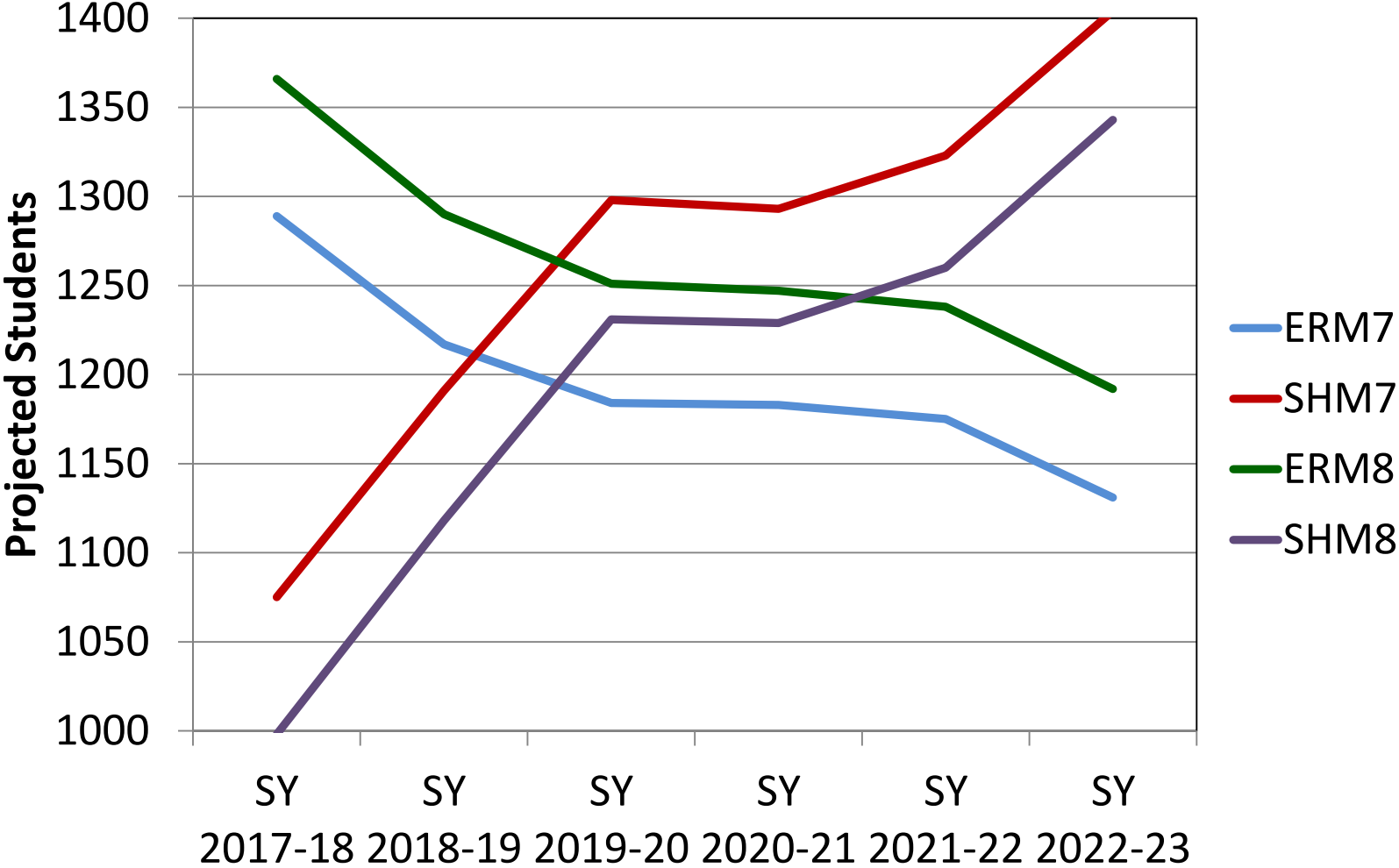
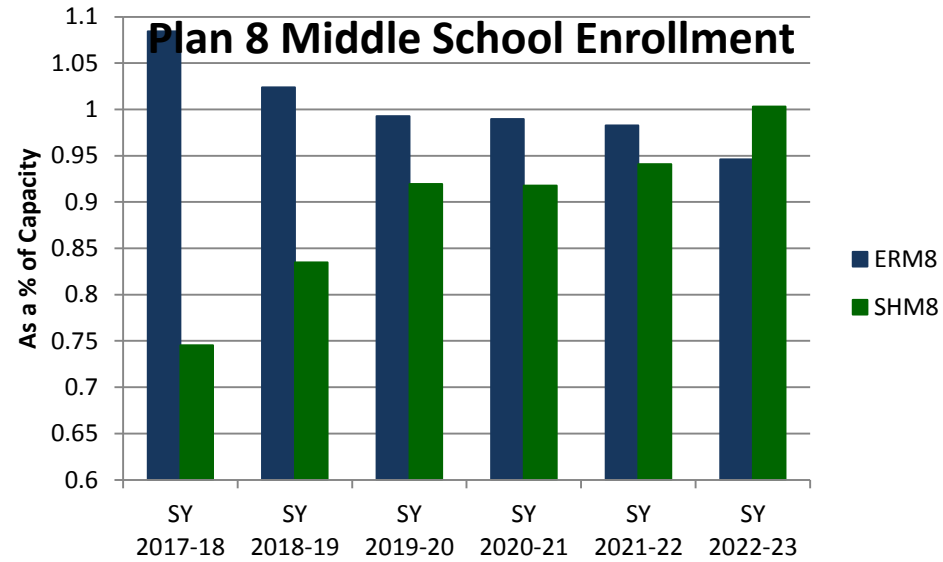
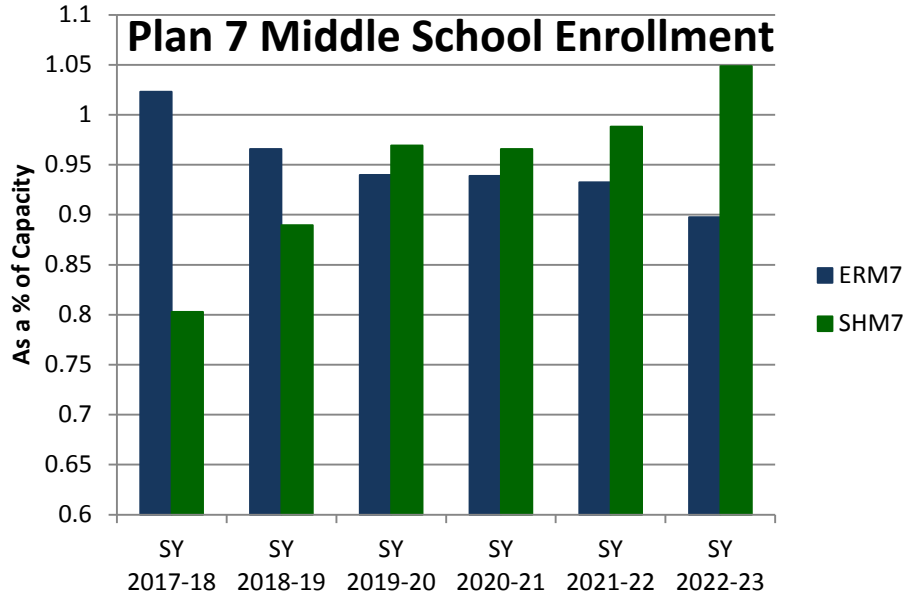


Middle School Trends

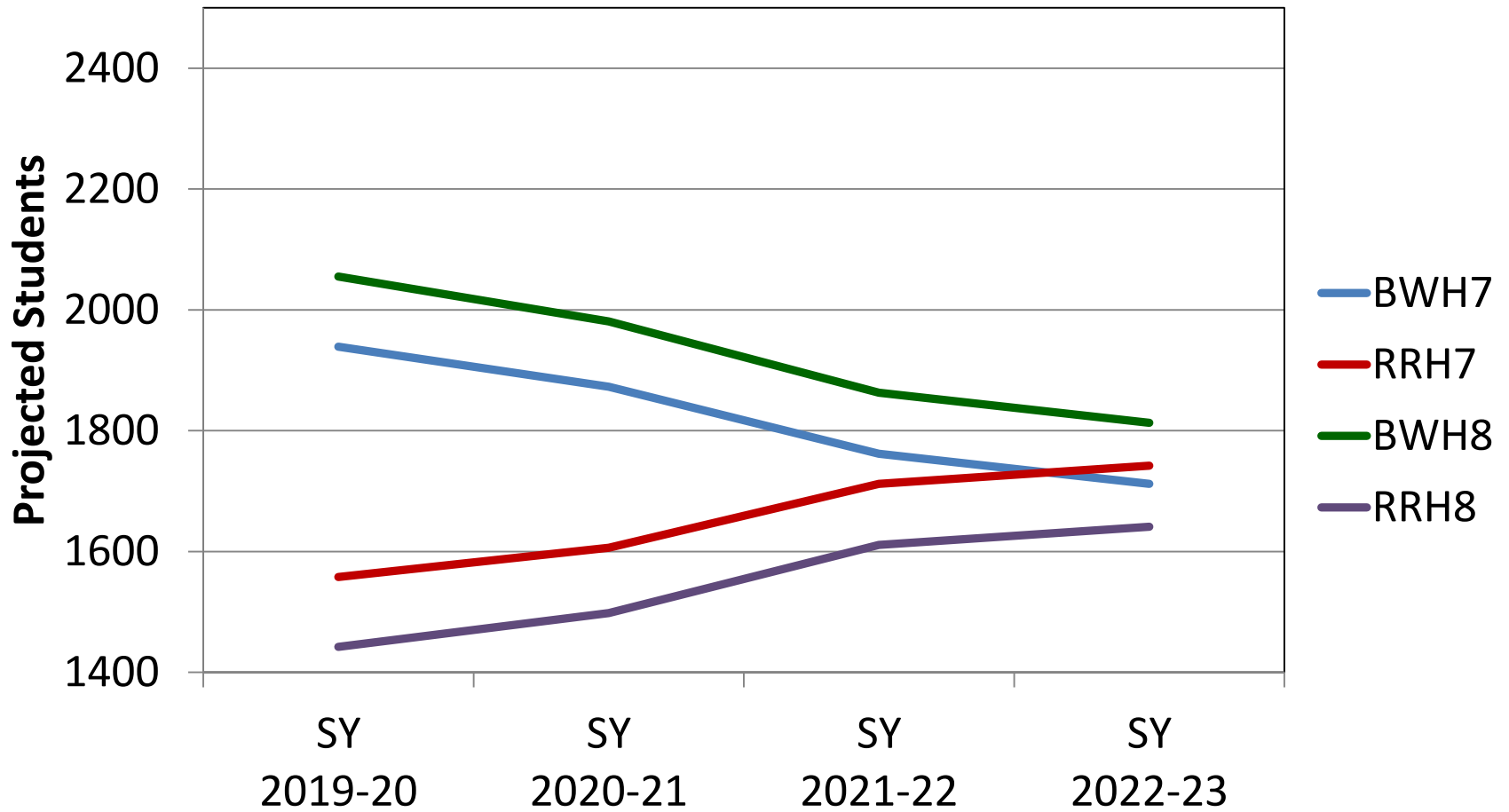


Middle School Plan 7 Versus Plan 8

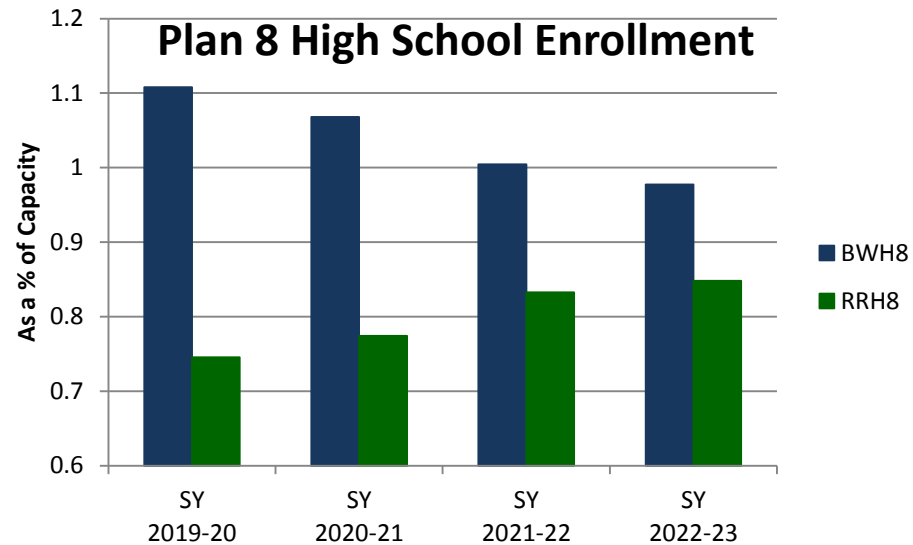
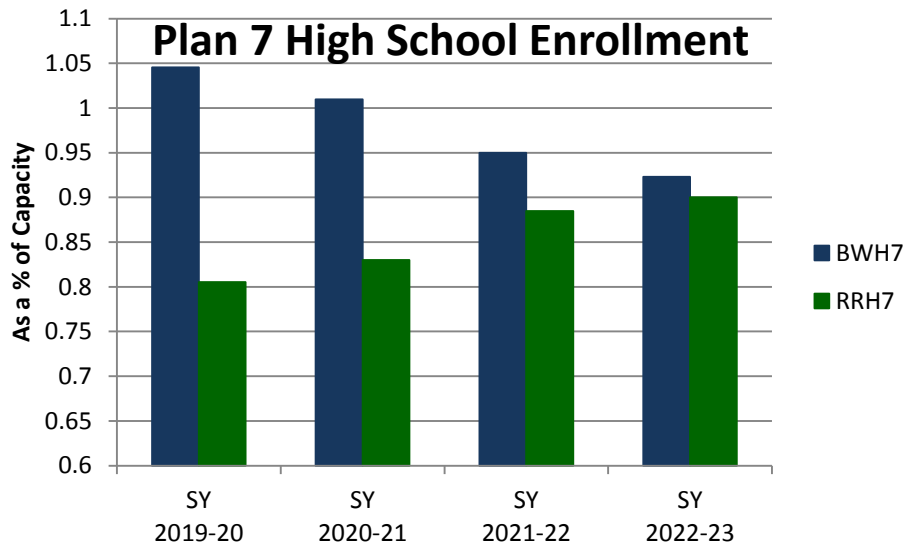


Next Middle School in Dulles North: 2030

High School Trends



High School Plan 7 Versus Plan 8



Next High School in Dulles North: 2030

Consistent Approach with Plan 8

School	Maximum Enrollment % (without trailers)	Duration	Trend
BAM	130	4 years	++
RRH	123	2 years	++
MS-7	119	3 years	++
MMS	118 (138)	4 years	+ +
FHS	116 (121)	5 years	-
JML	114	5 years	-
BWH	111 (125)	5 years	--
ERM	108	2 years	-
JCH	106 (102)	1 year	++
SHM	101	1 year	++

High School Numbers do not reflect the addition of the Academies of Loudoun,
To open in 2018 with a capacity of 1600 students