

Health, Safety, and Wellness Committee Presentation

Loudoun County Public Schools
May 7, 2012

Allyne Zappalla

Safe School Ambassadors

Allyne Zappalla
Student Support Services Supervisor

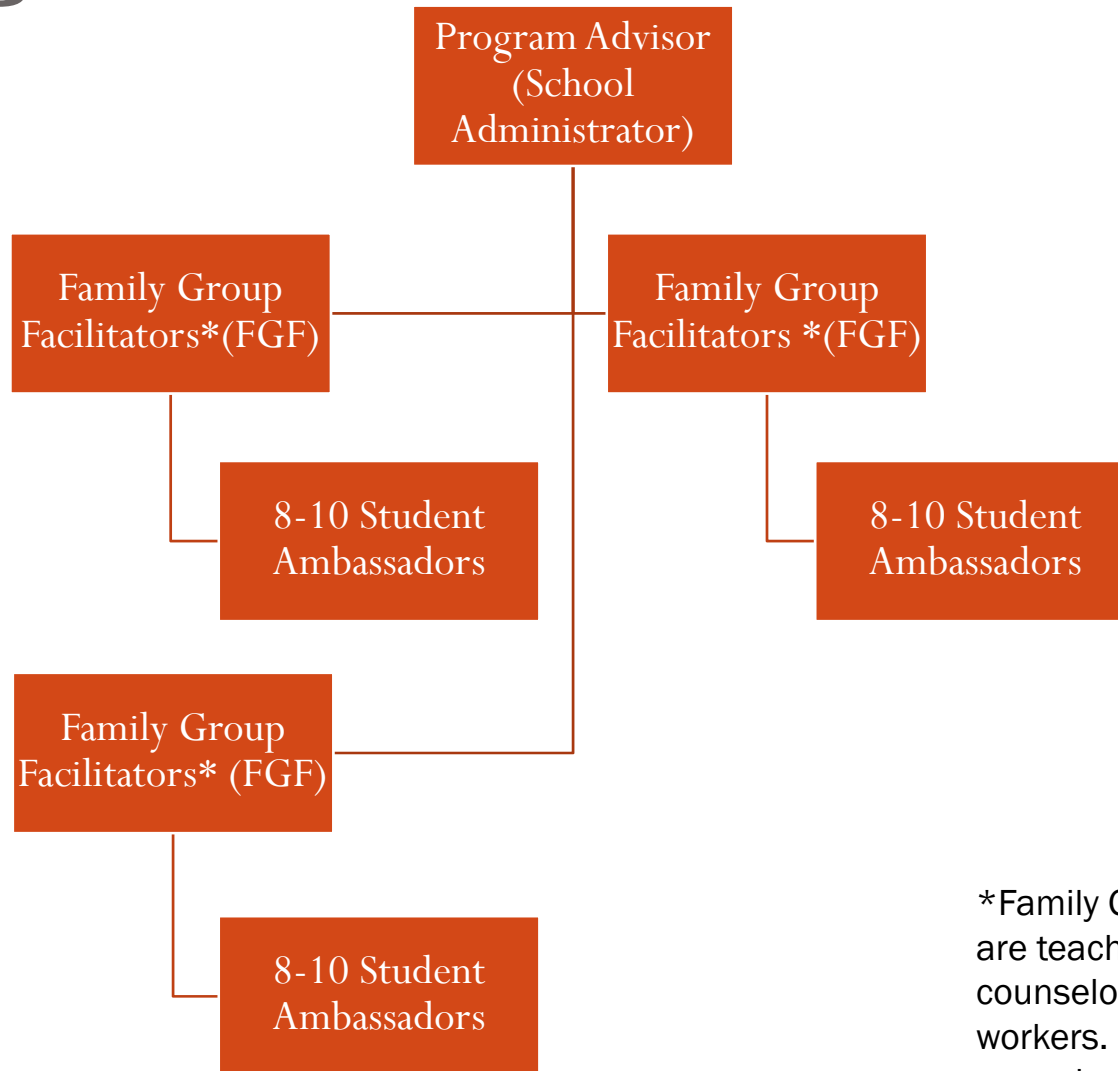
What is the Safe School Ambassadors Program?

- A research-based, field-tested, logic model.
- A proven anti-bullying and violence-prevention program.
- Student-centered.
- Focused on social norms change (Students determine the social norms—what's OK and what's not) and promoting positive school climate.
- Ambassadors help their friends make better choices about how to treat others, and help them avoid trouble.
- Ambassadors are selected based on recommendations from teachers, administrators, school counselors, school social workers.

Who Are Safe School Ambassadors?

- Student leaders from diverse groups who are influential among their peers.
- Students with strong communication skills, an outgoing personality, empathy and compassion.
- Ambassadors are trained in the skills of nonviolent communication to stop bullying and violence.
- Adults facilitate ongoing small (Family) group meetings that provide Ambassadors with supervision, skill development and support.

Program Structure



*Family Group Facilitators are teachers, school counselors or school social workers. Each family group has 2 facilitators.

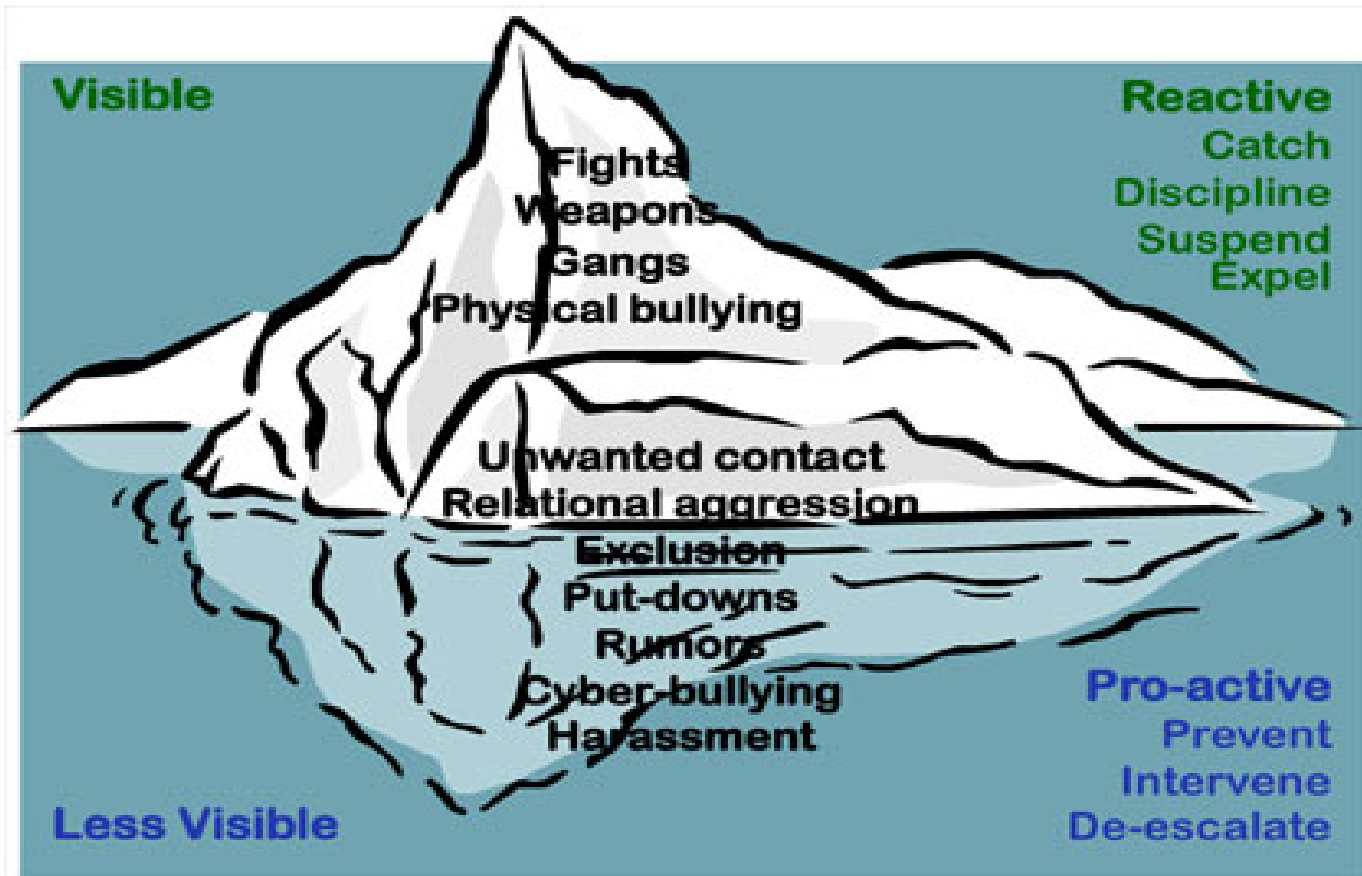
Types of Mistreatment

- Put Downs (hurt feelings)
- Exclusion (left out)
- Bullying (threat/fear)
- Unwanted physical contact
(pushing/hitting/inappropriate touching)
- Acts against campus (something that affects everyone)

Ambassador Skills/Interventions

- Balancing -- Put up a put down (Counteracting)
- Supporting -- Show you care
- Reasoning -- Get them to THINK...consequences
- Distracting -- Change the subject
- Active Listening -- Paying attention (non-verbal) and show understanding by responding
- Getting Help -- Seek adult help when a situation is dangerous or too much to handle alone

Why SSA Works



Outcome Data

- **Overall Middle School Results:**
 - 47% decrease in the # of Bullying Incidents
- Currently analyzing High School results to differentiate reporting of “Bullying” vs. “Harassment”.

Current SSA Schools

MIDDLE SCHOOLS

- BLUE RIDGE
- HARMONY
- FARMWELL STATION
- RIVER BEND
- STONE HILL
- EAGLE RIDGE
- STERLING MIDDLE
 - TRAINED 2011-2012:
- MERCER
- J.L. SIMPSON
- BELMONT RIDGE
- SMARTS MILL
- J.M. LUNSFORD

HIGH SCHOOLS

- BROAD RUN
- POTOMAC FALLS
- LOUDOUN VALLEY
- STONE BRIDGE
- PARK VIEW
 - TRAINED 2011-2012:
- WOODGROVE

Accomplishments

- Ambassador interventions have helped to engage isolated students (targets for bullies).
- Skill building and development have helped Ambassadors feel comfortable about knowing what to do and when to ask for adult intervention.
- Ambassadors have learned to be tolerant of differences and have been role models for others.
- 2006--75 Ambassadors
- 2012--890 Ambassadors and 207 Family Group Facilitators.

Accomplishments

- LVH's program was started by rising Ambassadors from BRM and HRM (our original SSA).
- BRH and SBH have developed social justice and bullying prevention programs as a result of their participation in SSA. Many SSA's at the high school level are also PEER Helpers.
- Several schools have combined their programs for training each year to enrich the knowledge, skill development and diversity awareness.
- School Social Workers, with the help of School Counselors, have developed a comprehensive Refresher Training Course for all schools the 2nd year of implementation and beyond.
- Several Middle Schools are also PBIS schools—with SSA complimenting the tenants of PBIS (ERM, SHM, BEM, FWS, JML, MMS, and STM).

*“An eye for an eye
makes the world blind.”*

- Mahatma Gandhi