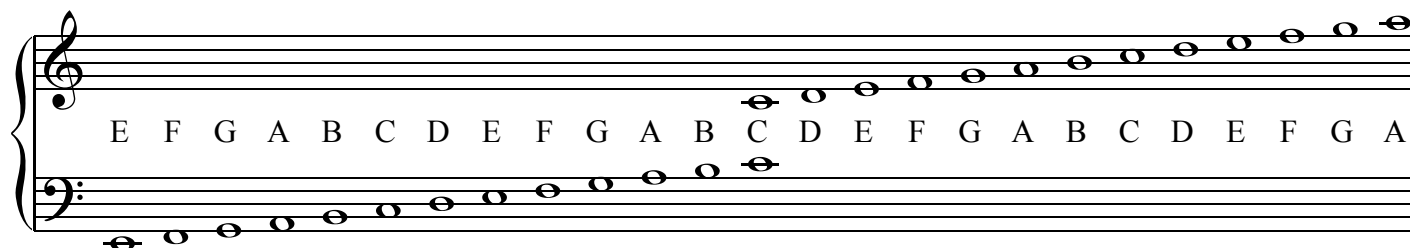


Cheat Sheet

LINES AND SPACES



Shortcut

Bass Clef

Lines: GBDFA (Great Big Dogs Fight Animals)

Spaces: ACEG (All Cows Eat Grass)

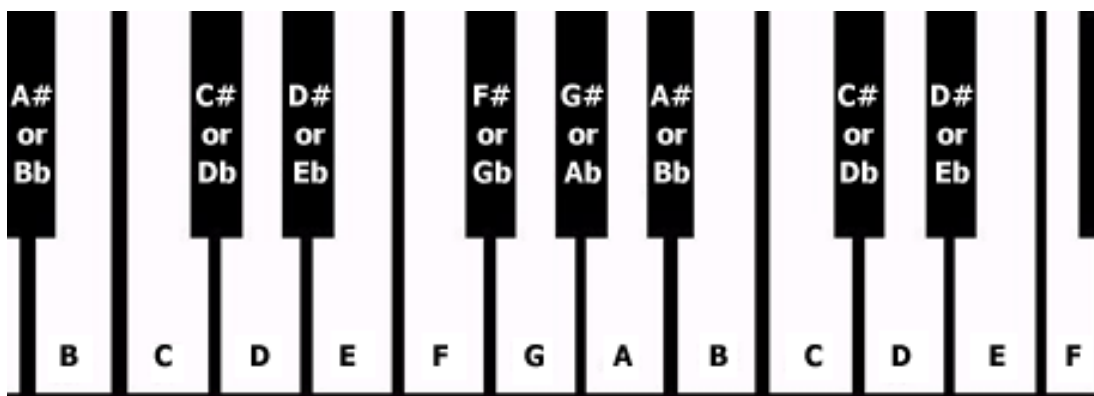
Shortcut

Treble Clef

Lines: EGBDF (Every Good Boy Deserves Fudge)

Spaces: FACE

KEYBOARD WITH NOTE NAMES



NOTE & REST VALUES

