



**COUNTY OF LOUDOUN
PARKS, RECREATION AND COMMUNITY SERVICES
REFERRAL MEMORANDUM**

To: Rob Donaldson, Project Manager, Planning and Zoning (MSC #62)

From: Mark A. Novak, Chief Park Planner, Facilities Planning and Development (MSC #78)

CC: Steve Torpy, Director
Jeremy Payne, Deputy Director
Rameir Martin, Assistant Director
Myla Neal, Assistant Director
Kristen Blaylock-Reed, Chairman, PROS Board, Dulles District
Kelly Foltman, Vice Chairman, PROS Board, Little River District
James O'connor, PROS Board, Algonkian District
Vacant, PROS Board, Catoctin District
Brody McCray, PROS Board, Leesburg District
Mark Hair, PROS Board, Ashburn District
Vacant, PROS Board, Sterling District
Patty Fisher, PROS Board, Broad Run District
Tom Bellanca, PROS Board, Chair At-Large
Carrie-Anne Mosley, Open Space Member At-Large
Erik Scudder, Open Space Member At-Large

Date: December 20, 2022

Subject: Academies of Loudoun Service Center | CMPT 2022-0003 & SPEX 2022-0038
(2nd Submission)

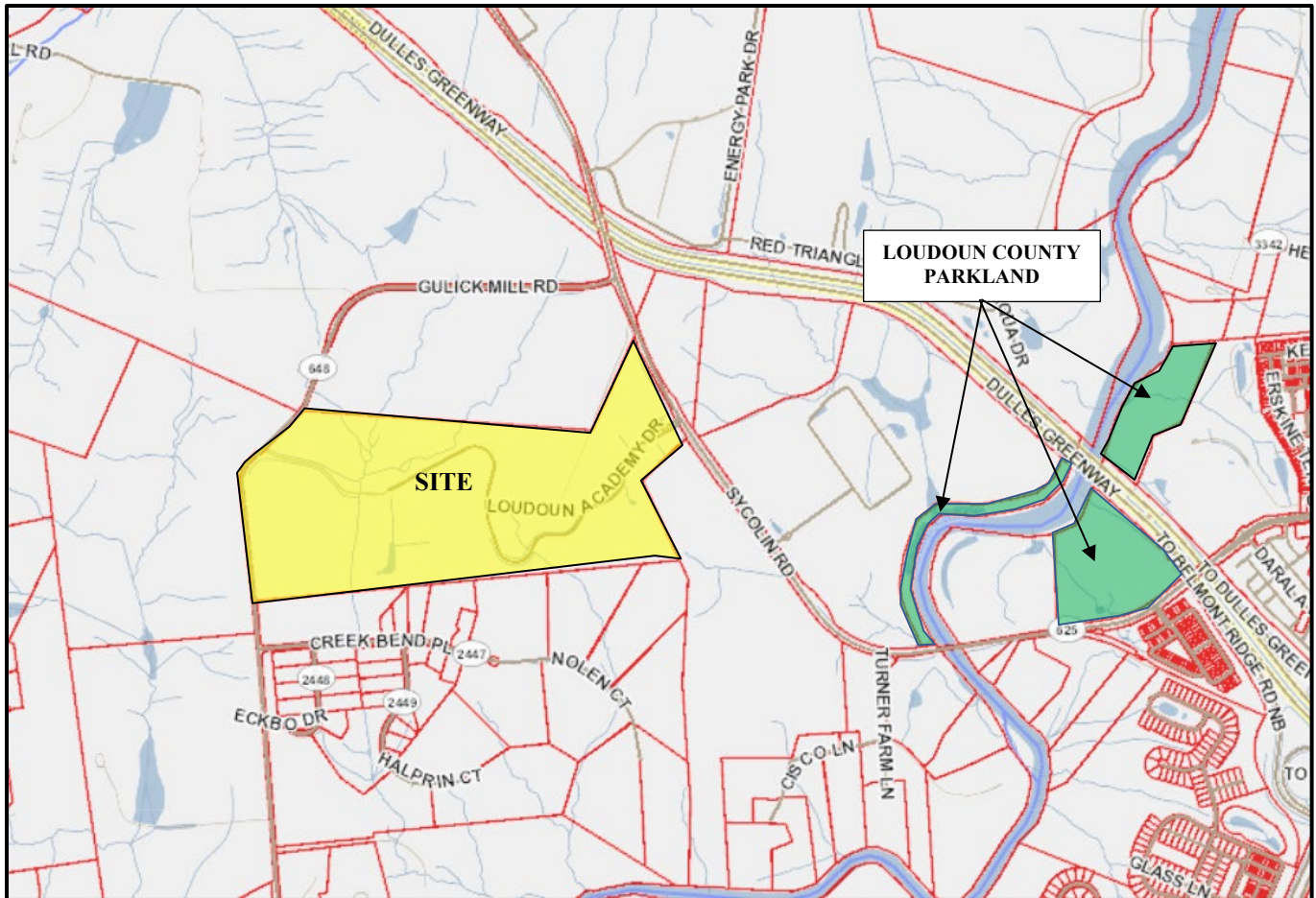
Election District: Catoctin **Planning Sub Area:** Leesburg

MCPI # 194-16-6764

APPLICATION OVERVIEW:

The Loudoun County School Board seeks approval of a Commission Permit (CMPT) and Special Exception (SPEX) to allow a public utility service center with outdoor storage to be co-located on The Academies of Loudoun 119-acre property. The site is located at 42075 Loudoun Academy Drive, on the west side of Sycolin Road, to the east of Gulick Mill Road and to the southwest of the Dulles Greenway. The site is located within the Catoctin (Little River) Election

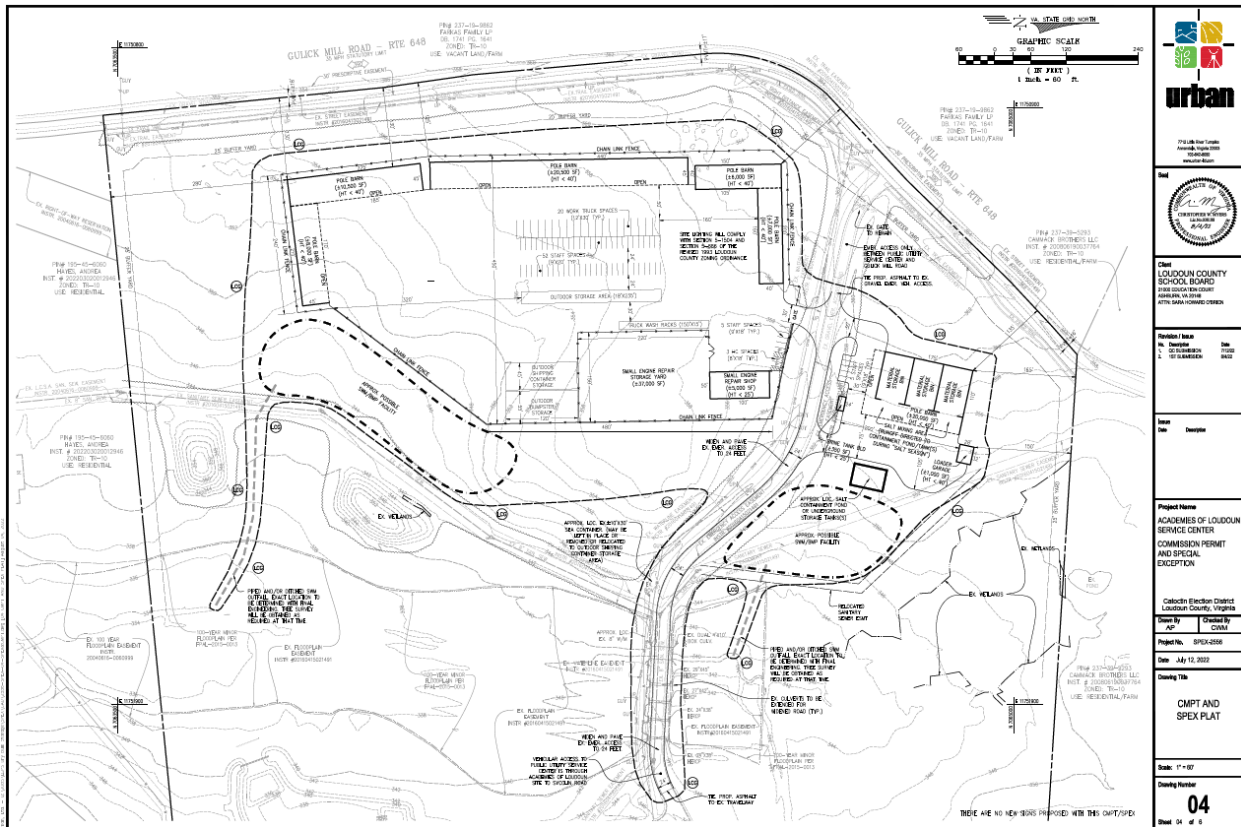
District/Leesburg Planning Sub Area. The property is zoned TR-10, Transition Residential – 10, and is within the AI (Airport Impact Overlay) District (within one mile of LDN 60 contour for the Leesburg Airport), the FOD (Floodplain Overlay) District – Minor, and steep slope district (moderate and very steep).



VICINITY MAP

PROJECT PROPOSAL:

The primary purpose of the proposed public utility service center is to house the grounds and inclement weather maintenance operations of LCPS. The site would be used to store grounds maintenance equipment (trucks, trailers, mowers) as well as sand, salt, and similar materials to be accessed during inclement weather for treatment of LCPS and County of Loudoun owned properties (i.e., driveways and parking lots).



CMPT/SPEX PLAT

COMMENTS/RECOMMENDATIONS:

The Department of Parks, Recreation and Community Services (PRCS) has reviewed the Applicant’s proposal and has no objections as presented. However, defers to other referral agencies for additional comments. PRCS has no further comments.

If you have any questions or concerns regarding these comments, please do not hesitate to contact me at 703-737-8992 or mark.novak@loudoun.gov.