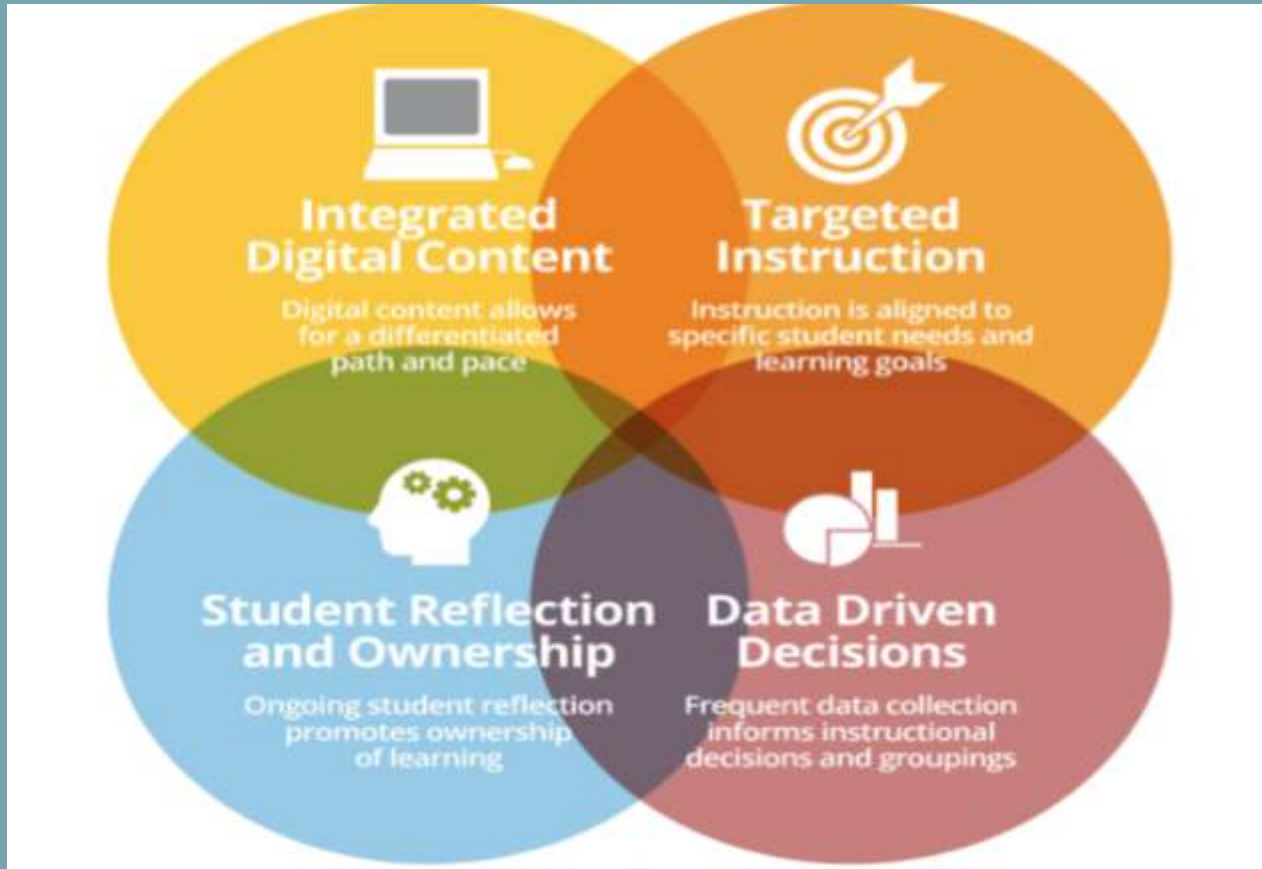


Rosa Lee Carter

Loudoun County Public Schools
Personalized Learning



Core 4



Student Reflection & Ownership

Action 1: Use the final 5-10 minutes of the lesson to recap objectives and student learning.

Action 2: Set a learning goals with students to ensure learning ownership.

Action 3: Hold students accountable for their progress in the digital content (ie. goal setting, reflection, digital badges, etc).

Foundational Skills

1. Students need a way to feel supported in the learning process because they are afraid of risk taking that may result in failure.

2. Learning tasks are built in part on student interests and roles may incorporate specific strengths.



3. Students exhibit choice in audiences or types of products created

4. Connections that students make are tailored to their interests and strengths

Loudoun Personalized Learning Vision

PL Delivery

Integrated Digital Content

Targeted Instruction

Data Driven Decisions

Student Reflection and Ownership

One to the World

Project Based Learning

Content/Competencies

Students experience a mix of learning challenges appropriate to their background knowledge and interests

Authentic, Challenging Problems

Learning tasks are built in part on student interests and roles may incorporate specific strengths

Public Product

Students exhibit choice in audiences or types of products created

Connected with the World

Connections that students make are tailored to their interests and strengths

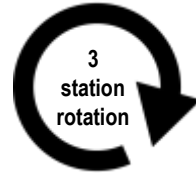
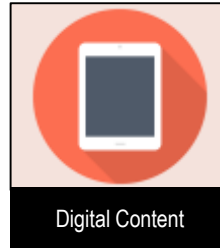
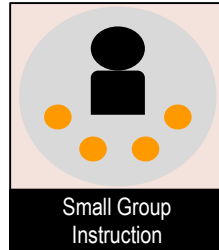
Group Learning

Empowering all students to make meaningful contributions to the world

Station Rotation Instructional Model: Beginner



Introduce or review new concepts followed by a quick check for understanding.

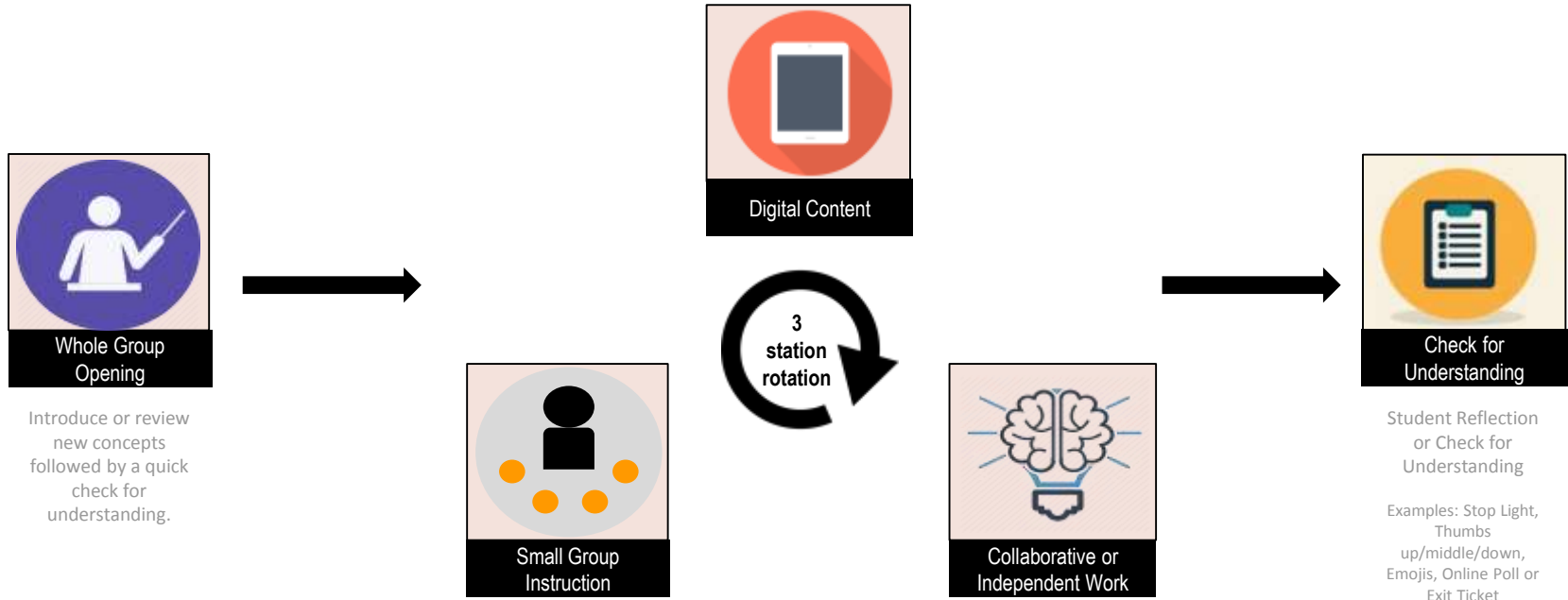


Student Reflection or Check for Understanding

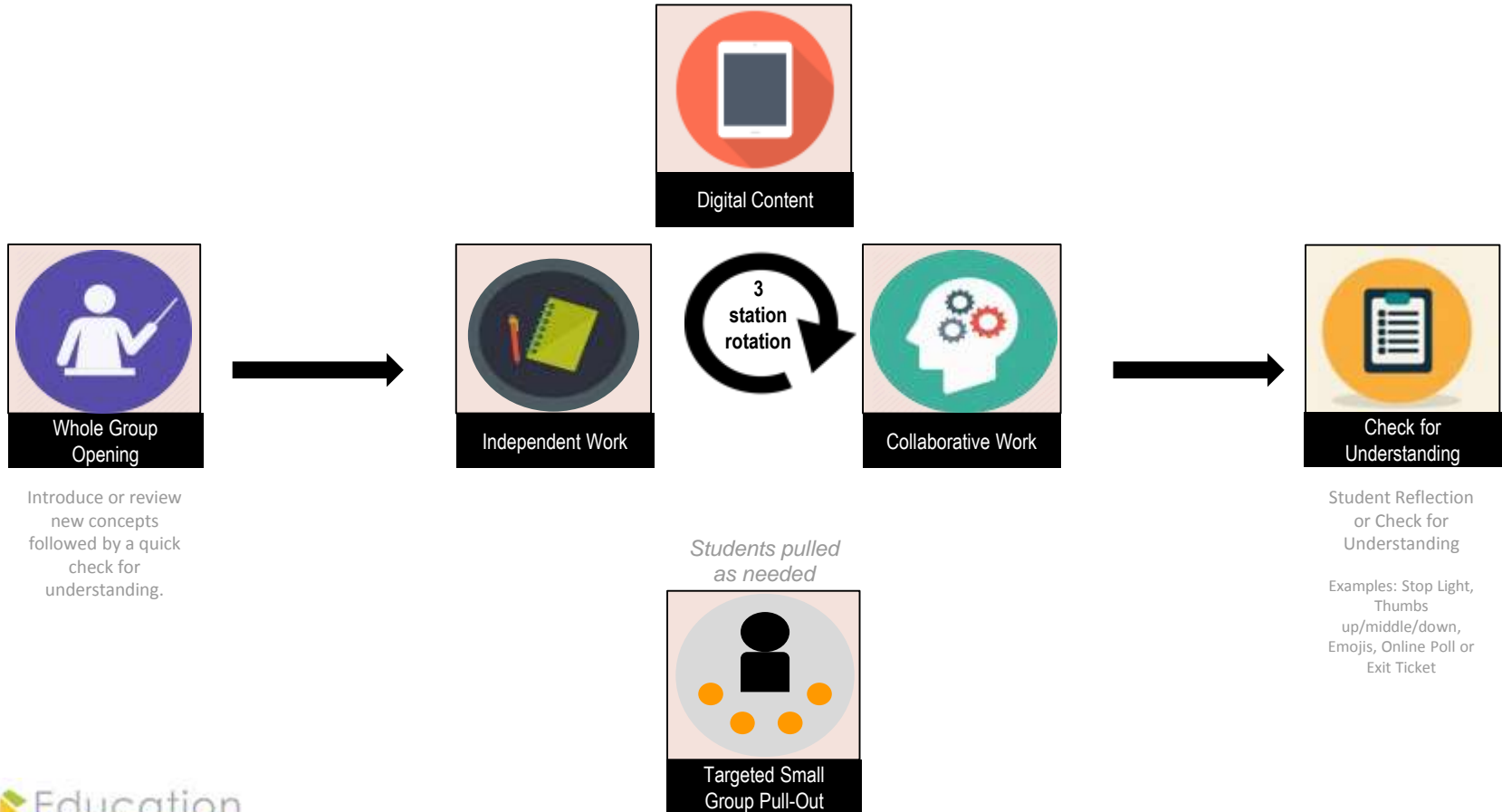
Examples: Stop Light, Thumbs up/middle/down, Emojis, Online Poll or Exit Ticket

Station Rotation with Choice Instructional Model: Beginner

Teacher or Student has a Choice between activities which could include: Teacher chooses different activities for stations; Student has choice of what to complete and chooses to attend 2 of the 3 stations. Student has choice to work individually or with peers at collaborative station.



Station Rotation with Targeted Pull-Out Instructional Model: Mid Level



*Inspiring students to
own their educational
journey thereby
reaching their full
potential.*